

Breaking Barriers & Building Bridges

29 -31 AUGUST 2025

Singapore EXPO

www.SGCR-WIRES.com/AMS2025



Scan for more details:
Register Today!

WHAT TO EXPECT?



Musculoskeletal Radiology

Global Voices that Resonate, Messages that Matter.

Key Speakers: Prof. Donald Resnick, USA. Prof. Bruce Forster, Vancouver. Prof. Jung Joon-Yong, South Korea. Asst. Prof. Takeshi Fukuda, Japan. Dr. Naga Varaprasad Vemuri, India.

SRS Meets Mayo Clinic – Abdominal Imaging Masterclass

Elevate your expertise in abdominal imaging at this collaborative event between **Mayo Clinic** and SRS featuring an exceptional lineup of renowned abdominal radiologists from Mayo Clinic and Singapore.



Cardiac Imaging

Highlights include expert local and international speakers, discussions on **photon counting CT** and a comprehensive, **hands-on CT Coronary Angiogram** interpretation course.

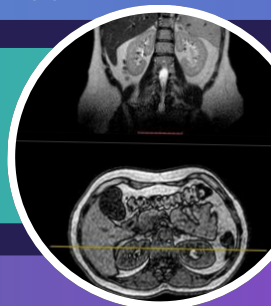
Artificial Intelligence and Informatics

Radiology AI and Informatics: Revisiting our **Past**, examining the **Present** and crafting our **Future** in the region.



Interventional Radiology

Experience a **comprehensive interventional radiology** conference covering a broad spectrum of topics, with a special emphasis on **musculoskeletal interventions**.



CONFERENCE PASS TICKETS

Registration Type	Early Bird (Till 31 May 2025)	Regular (1 Jun – 15 Aug 2025)	Onsite (29 – 31 Aug 2025)
Standard	S\$825	S\$980	S\$1,170
AMS / SRS / CRS Members	S\$635	S\$780	S\$980
Allied Health / Nursing	S\$535	S\$680	S\$980
SSR Members	S\$485	S\$580	S\$980
Trainee/ Students*	S\$275	S\$275	S\$400
LMIC*	S\$275	S\$380	S\$580
Nursing & Allied Health Exclusive: One (1) Day Registration Rate [Option to select any one day]	S\$250	S\$250	S\$250
Nursing & Allied Health Exclusive: Two (2) Day Registration Rate [Option to select any two days]	S\$450	S\$450	S\$450

Prices are in Singapore Dollar and inclusive of Goods and Service Tax (GST).

*Verification required upon registration

WORKSHOPS

Pre-conference Workshops

**MSK MRI Interpretation
Workshop (Basic)**

**MSK MRI
Interpretation Workshop
(Advanced)**

**Hepatobiliary and
Pancreas Workshop**

**Ultrasound in Motion: A Hands-on
MSK Workshop (Basic)**

**Advanced Ultrasound Workshop –
Brachial Plexus, Sports Injuries, and
Pain Management Techniques**

**Mastering mpMRI Prostate – How to
Read Like an Expert**

**Introduction to 3D Printing for
Radiologists– Segmentation and
Modeling Basics**

Workshop

**Essentials Of CT Coronary Artery Angiograms (CTCA):
A Hands-On Workshop For Beginners**

SPEAKER HIGHLIGHTS



Prof Donald Resnick is a distinguished leader in musculoskeletal radiology, with decades of experience in diagnosing and managing complex conditions. He has delivered over 1,200 lectures globally and mentored many top experts of today in the field. His deep clinical insights and expertise in complex cases have played a pivotal role in advancing the field of musculoskeletal radiology on an international scale.

Prof Donald Resnick

University of California, San Diego
United States of America

Dr. Christine Onsy Menias is a Professor of Radiology at Mayo Clinic and a leading expert in Abdominal Imaging, specializing in oncology, transplant, gynecologic, and emergency radiology. Besides clinical work, she is also an author and a passionate educator, receiving prestigious awards, including the RSNA Lifetime Honored Educator Award and SAR Gold Medal. In 2018, she was named Mayo Clinic Arizona Distinguished Clinician. Dr. Menias currently serves as editor-in-chief of RadioGraphics.



Dr. Christine Onsy Menias

Mayo Clinic
United States of America



Dr. Woojin Kim, MD, is Chief Medical Officer at ACR DSI, Chief Strategy and Medical Information Officer at HOPPR, and a musculoskeletal radiologist at the Palo Alto VA. He co-founded Equium Intelligence, later acquired by Rad AI, where he served as CMIO until 2025. Formerly CMIO at Nuance (2016–2019), he also co-founded Montage Healthcare Solutions, acquired by Nuance in 2016. Dr. Kim previously held the role of Interim Chief of MSK Imaging at the Hospital of the University of Pennsylvania.

Dr. Woojin Kim

American College of Radiology Data Science Institute
United States of America

Dr. Tilman Emrich is a cardiovascular radiologist at University Medical Center Mainz and Director of Photon Counting CT Research at the Medical University of South Carolina. Board-certified in diagnostic radiology and cardiac imaging, his research focuses on Photon Counting Detector CT and Multiparametric Cardiac Imaging. He has received numerous awards, including the Barclay Medal and AHA Young Investigator Award, and serves as Editor-in-Chief of Topics in Magnetic Resonance Imaging and Associate Editor for leading journals.



Asst. Prof Tilman Emrich

University Medical Center of the Johannes Gutenberg- University Mainz
Germany



Douglas P. Beall, MD, is board-certified in Diagnostic Radiology, has an added fellowship in Musculoskeletal Radiology, is a Diplomate of the American Academy of Pain Management and is a Fellow of the Society of Interventional Radiology and Interventional Pain Practice and board certified by the World Institute of Pain. He is currently in private practice focused on interventional pain management and minimally invasive surgical procedures.

Dr Douglas P. Beall

American College of Radiology Data Science Institute
United States of America

Organised
By



Asian
Musculoskeletal
Society



Singapore
Radiological
Society



College of
Radiologists
Singapore

Supported By



Held In



Passion
Made
Possible

Managed By

Conectere
Events